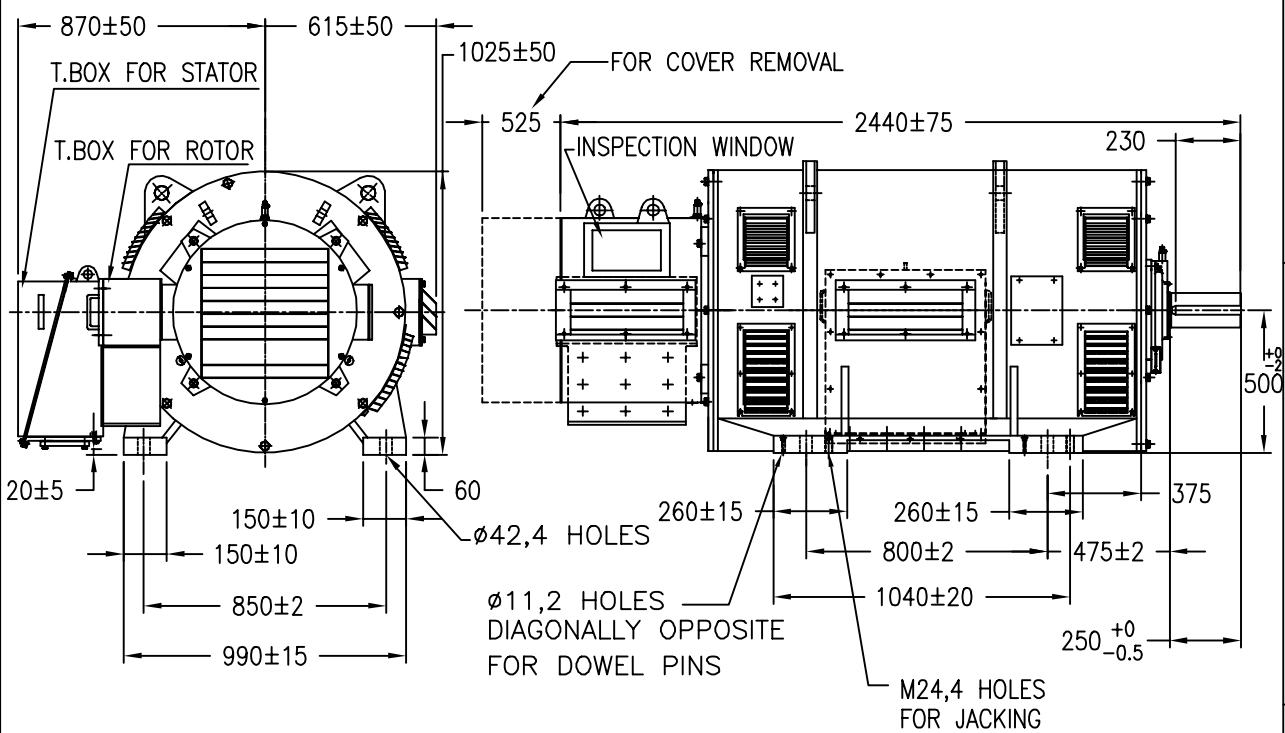


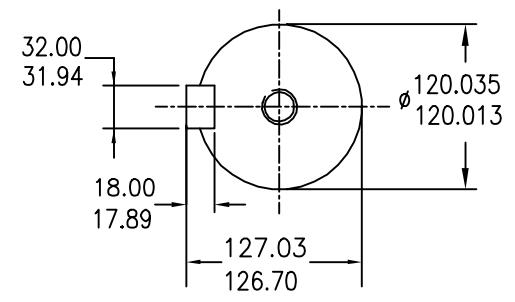
IF IN DOUBT ASK
LME

4 3 2 1
DO NOT SCALE THE DRAWING ALL DIMENSIONS ARE IN mm UNLESS OTHERWISE STATED

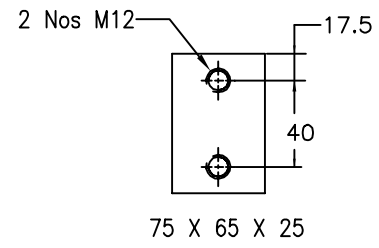


ALL INFORMATION CONTAINED IN THIS DOCUMENT IS CONFIDENTIAL AND THE PROPERTY OF KIRLOSKAR ELECTRIC CO. LTD. REPRODUCTION OF THESE IN ANY FORM IS TO BE DONE WITH THE SPECIFIC PERMISSION OF THE COMPANY.

SL.NO	TERMINAL BOX	DRAWING NO.
1	STATOR	43506201
2	ROTOR	43521599



SHAFT EXTENSION DETAILS



EARTHING PAD

NOTE

1. MOTOR CONFORMS TO IS:325
2. ENCLOSURE IP:23/IC01
3. MOUNTING IM:1001.
4. WEIGHT OF THE MOTOR 4500 Kg.

SIGN & DATE.
FROM dt.
DRAWING No.

REV.	ZONE	BRIEF RECORD	SIGNATURE	DATE	PRINTS ISSUED TO.
					MKTG.ACM

CUSTOMER / O/A No.	SCALE NTS	DRAWN SL 22/11/03
USED ON / TYPE KCW 500C 750kW,415VOLTS,750SRPM		CHECKED KN 22/11/03
TITLE: DIMENSIONAL DRAWING		APPROVED KN 22/11/03

DRG. NO. **43515703**
SHEET NO. 1 OF 1



FORM No. 11401037