

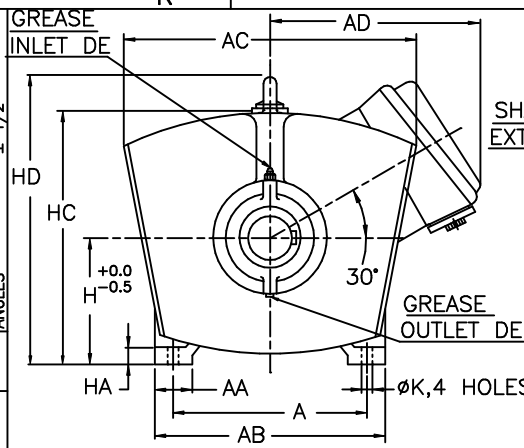
UNMENTIONED TOLERANCES

LINEAR	ABOVE 0	6	315	1000
DIMENSIONS (UPTO)	6	315	1000	2000
(MACHINED) TOL.		±0.2	±0.5	±0.8
ANGLES		± 1/2°		

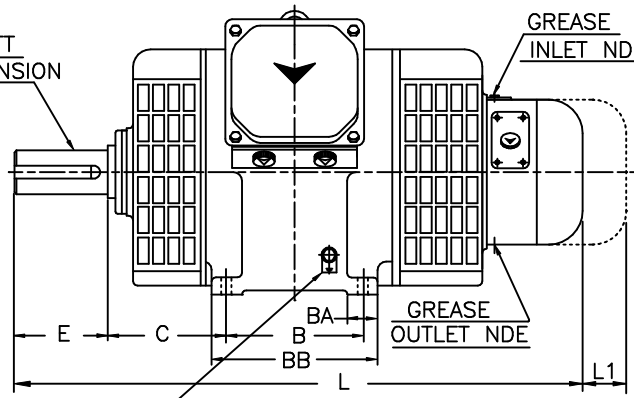
ALL INFORMATION CONTAINED IN THIS DOCUMENT IS CONFIDENTIAL AND THE PROPERTY OF KIRLOSKAR ELECTRIC CO.LTD, REPRODUCING OF THESE IN ANY FORM IS TO BE DONE WITH THE SPECIFIC PERMISSION OF THE COMPANY.

SURFACE ROUGHNESS (MAX) AS PER KSD-02-027

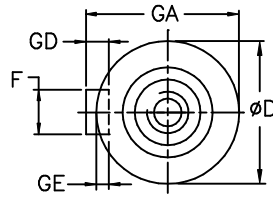
Re	50	12.5	25	1.6	3.2	6.3	0.2	0.4	0.6	0.8	0.025	0.05	0.1
OLD	✓	✓	✓	✓	✓	✓	✓	✓	✓	✓	✓	✓	✓
NEW	✓	✓	✓	✓	✓	✓	✓	✓	✓	✓	✓	✓	✓



DIMENSIONAL DRAWING

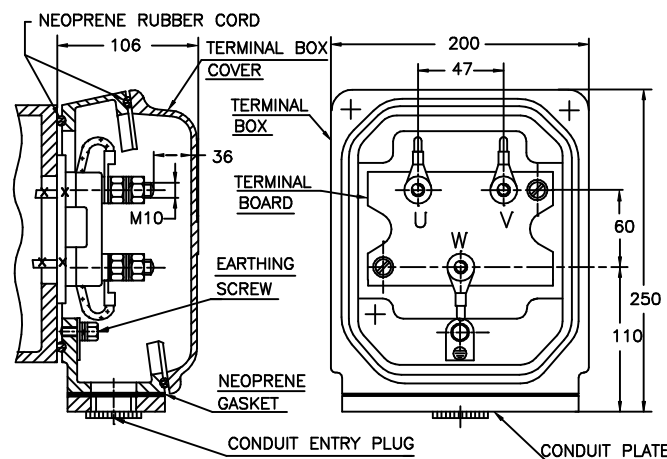


2 Nos. OF M10 EARTHING SCREWS ONE ON EACH SIDE.



DETAILS OF SHAFT EXTENSION DETAILS

TERMINAL BOX ARRANGEMENT



MAX. CABLE SIZE : 1X3CX70sqmm.

ITEM/TAG No.			
RATING			
CABLE SIZE		JOB No. :	
O/A NO.:		CUSTOMER :	
PROJECT :		CONSULTANT :	

NOTE:

1. DIMENSIONS ARE AS PER IS:1231.
2. INDEX OF PROTECTION : IP:22.
3. TOLERANCE ON 'D' : m6 INCLUDING & ABOVE Ø55
4. PROTECTED CENTRE HOLE AT SHAFT EXTENSION AS PER IS:2540. "M20 X 40" FOR 'D'- Ø55 TO Ø80
5. KEY & KEYWAY ARE AS PER IS:2048 & TOLERANCE ON KEYWAY IS P9.
6. TOLERANCES FOR THE BASIC DIMENSIONS OF THE MOTOR, REFER KSD-03-179.

5	SB225M	4,6 & 8	356	75	440	525	335	311	85	360	149	65	140	18	69	11	7	225	25	451	532	19	1015	120
4	SB200L	4,6 & 8	318	72	388	470	313	305	75	354	133	60	140	18	64	11	7	200	25	400	481	19	990	120
3	SB200M	4,6 & 8	318	72	388	470	313	267	75	317	133	60	140	18	64	11	7	200	25	400	481	19	965	120
2	SB180L	4,6 & 8	279	60	343	400	295	279	72	330	121	55	110	16	59	10	6	180	20	355	436	15	882	100
1	SB180M	4,6 & 8	279	60	343	400	295	241	72	290	121	55	110	16	59	10	6	180	20	355	436	15	857	100
SL.No.	FRAME	POLES	A	AA	AB	AC	AD	B	BA	BB	C	ØD	E	F	GA	GD	GE	H	HA	HC	HD	ØK	L	L1

Z122392000JR

UC:																								
RAJ:																								
REV.	1	---	0122209																					
ZONE	8																							
DCN.No.																								
BRIEF RECORD																								
SIGNATURE																								
DATE																								
PRINTS ISSUED TO																								
QA																								
MARKETING																								
PRODUCTION																								

THIS SUPERSEDES FROM dt AS PER DCN No.

THIS SUPERSEDED BY FROM dt AS PER DCN No.

MATERIAL SPECIFICATION	RAW MATERIAL SIZE	WEIGHT kg	
		RM	FIN.
		-	-
CASTING/FAB REF.		No.P.S.:	
USED ON		REDRAWN	CHECKED
			STANDARD
			APPROVED
		Sd/-	Sd/-
		Sd/-	Sd/-
		dt:22/01/2009	dt:22/01/2009
		dt:22/01/2009	dt:22/01/2009

SB180 TO 225

TITLE: **DIMENSION SHEET** **32239298**

(WITH TERMINAL BOX ARRANGEMENT)

SHEET one OF one

KIRLOSKAR ELECTRIC COMPANY LTD. HUBLI-580030 (INDIA)

